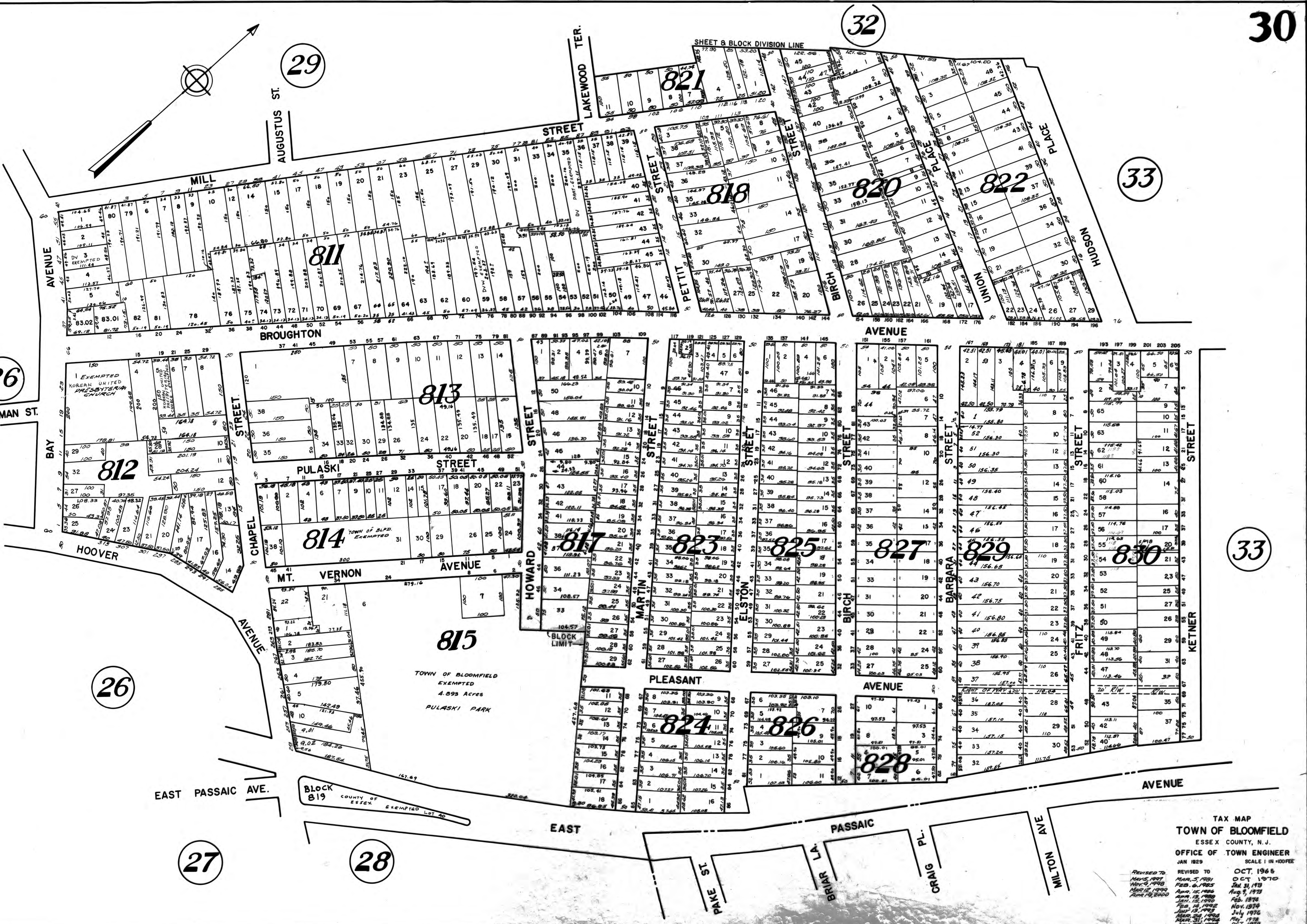


SHEET & BLOCK DIVISION LINE



TAX MAP
 TOWN OF BLOOMFIELD
 ESSEX COUNTY, N. J.
 OFFICE OF TOWN ENGINEER
 JAN 1929 SCALE 1"=100FEET

REVISED TO	REVISED TO	OCT. 1965
MAY 5, 1931	MAR. 5, 1931	
MAY 9, 1933	FEB. 6, 1935	OCT. 1970
MAR. 12, 1939	APR. 15, 1938	JAN. 31, 1973
APR. 19, 1939	APR. 13, 1939	AUG. 1, 1973
	JAN. 15, 1940	FEB. 1974
	FEB. 14, 1942	NOV. 1974
	JULY 13, 1943	JULY 1974
	MAR. 24, 1944	MAY 1978
	MAR. 31, 1944	MAY 1978
	JAN. 23, 1947	OCT. 1979