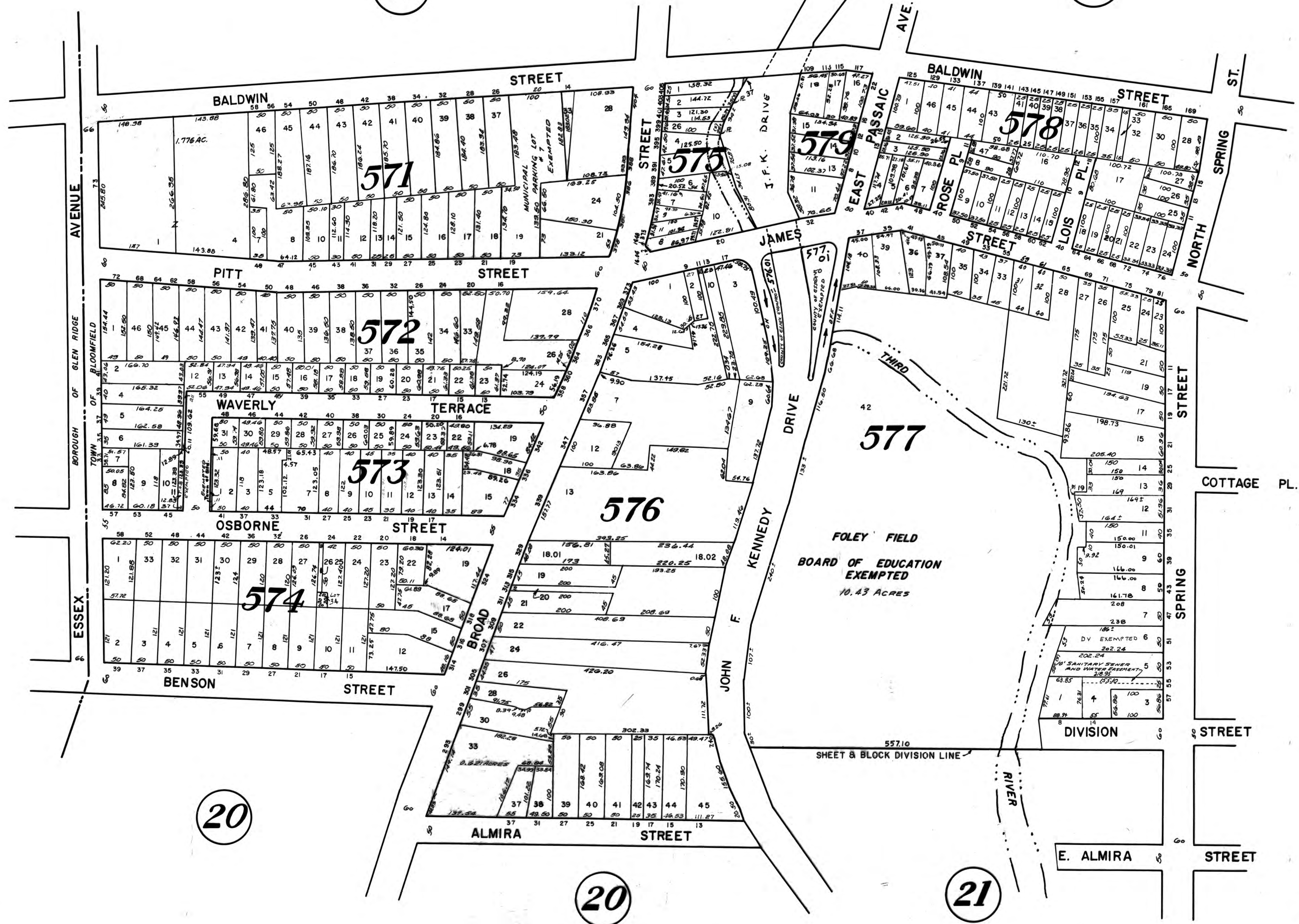


26

27



25

20

20

21

TAX MAP  
 TOWN OF BLOOMFIELD  
 ESSEX COUNTY, N. J.  
 OFFICE OF TOWN ENGINEER

JAN. 1928  
 REVISSED TO  
 Jan. 8, 1968  
 Jan. 11, 1970  
 Apr. 12, 1971  
 Jan. 18, 1972  
 Dec. 14, 1972

SCALE 1" = 100 FEET  
 OCT. 1965  
 OCT. 1970  
 AUG. 1971  
 JAN. 31, 1973  
 MAY, 1973  
 JULY, 1974  
 APRIL, 1975  
 JAN. 2, 1983  
 APRIL 24, 1985